

GREEN ASPECTS

SUSTAINABLE SITE

- // Construction activity pollution prevention
- // Rain water harvesting
- // Preferred parking spaces for carpools, low emitting and fuel efficient vehicles
- // Area dedicated for bicycle racks

WATER EFFICIENCY

- (35 % water saving from baseline)**
- // Low flow fixtures
 - // Treated rain water & condensate drain for WCs
 - // Irrigation from treated waste water
 - // Adaptive plants and climate responsive irrigation
 - // Measurement and Metering

ENERGY & ATMOSPHERE

- (34.7 % energy cost saving from baseline)**
- // Highly efficient building envelope
 - // Architectural shading/natural daylight
 - // High Performance cooling and heating from campus central plants
 - // High efficiency lighting
 - // Lighting and air-conditioning controls through daylight and occupancy sensors
 - // Demand controlled ventilation based on occupancy
 - // Heat Recovery
 - // Renewable energy systems for power and hot water generation
 - // Curtain management system with solar tracking
 - // Measurement and Metering

MATERIALS & RESOURCES

- // Storage & collection of recyclables (LAU Recycle For A Cause)
- // Construction waste management
- // Certified (renewable) wood
- // Regional materials

INDOOR AIR QUALITY

- // Using low emitting materials
- // Controlling indoor air quality during construction
- // Controlling lighting, thermal comfort and CO2 levels



TARGETING
LEED-GOLD

LIBRARY BUILDING

BYBLOS CAMPUS



Libraries must do what they always have done

"Be the mechanism for making knowledge available in communities and organizations"

DAVID W. LEWIS



Facilities Management's mission is to Plan, build, operate and maintain a sustainable, efficient, safe and advanced physical environment in which students, faculty and staff work to achieve excellence in teaching, learning, research and civic engagement.

We strive to be a role model in planning, constructing, preserving and enhancing the university's physical assets in support of LAU's overall mission, vision and goals.

- Facilities Management's goals are
- // Plan, design and build efficient, modern, sustainable and environmentally friendly university facilities in compliance with local and international building codes and standards.
 - // Provide a safe, clean, and aesthetically pleasing interior and exterior environment conducive to various educational activities by faculty, staff, and students.
 - // Operate, maintain and renovate existing facilities and infrastructure to ensure state-of-the-art, safe and efficient facilities.
 - // Develop and implement facilities management initiatives in support of the university's strategic plans and goals.

FACILITIES MANAGEMENT

FM.LAU.EDU.LB



LIBRARY BUILDING

BYBLOS CAMPUS



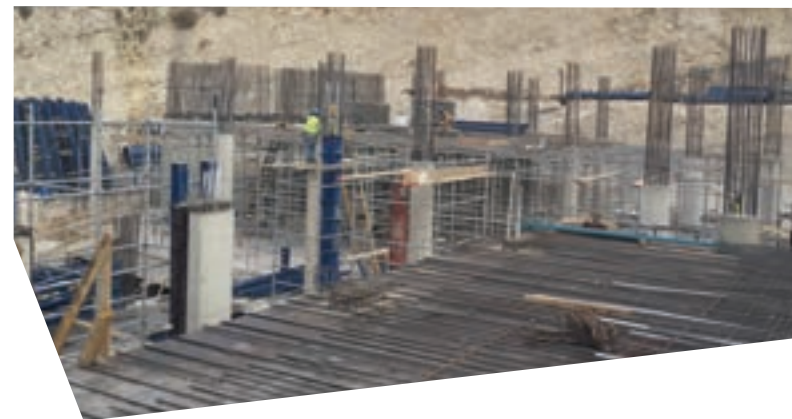
FACTS & FIGURES

BUILDING PROFILE

// Lead Consultant: Atelier Pagnamenta Torriani APT
 // Local Consultant: Rafik El Khoury & Partners
 // Engineer: D.G.Jones & Partners (ME) Ltd.
 // Technical Monitoring Office: Bureau VERITAS
 // Commissioning Authority: AJB
 // LEED Consultant: Rafik El Khoury & Partners
 // Contractor: NATCON
 // Total Project Budget: \$21,697,000
 // Total Area: 8,484.7 m²
 // Total Project Duration: 833 days

DESIGN PHASE

The new Byblos Library Building will be the new focus of the LAU Byblos campus. Atelier Pagnamenta Torriani (Atelier PT) researched the history, local culture and typology of this ancient city and weaved the findings in the conceptual design. Byblos is at the root of the Latin word Bibliotheca, or library, and is where the Phoenician alphabet originated. A pattern based on the ancient Phoenician alphabet will highlight Byblos's cultural heritage. Atelier PT proposed incorporating passive design features derived from the local typology into the conceptual phase and subsequently prompted the client to target LEED Gold for the project.



EXECUTION PHASE

The 6,540 square meters Library is in its final execution phase. Construction commenced in April 2016 and expected to be completed in May 2018. The Library will provide open study areas, computer areas, group study rooms, cyber café, administrative offices, multi-purpose rooms, a conference room and archive space.



COMPLETION PHASE

The New Library will officially open in Fall 2018-2019. It will provide technology-rich, creative and inspirational spaces to meet current and future needs. The aim is not just to add extra space but to create an outstanding facility which will provide for the needs of the University long into the future and distinguish LAU as an innovative and pioneering institution.



TOTAL AREA OF 6,541 m²

LEVEL	AREA (m ²)
Level 1	
Archive	1,806
Level 2	
Archive, Cyber Café, Computer Lab, Lounge, Study Rooms, Study areas, Info Commons, Multi-purpose Room, Classroom, Building Services	1,932
Level 3	
Offices, Study Rooms, Lounge, Quiet Study, Lobby, Building Services	849
Level 4	
Offices, Study Rooms, Lobby, Lounge, Quiet Study Areas, Building Services	967
Level 5	
Offices, Backlog Area, Conference room, Study Rooms, Lobby, Meeting Room, Study Areas, Staff Lounge, Building Services	987

LANDSCAPED AREA m²

Level 2	707
Level 3	1,907
TOTAL	2,614