

Libraries must do what they always have done:
“Be the mechanism for making knowledge available in
communities and organizations”

David W. Lewis

The new 8,386 sqm **Byblos Library and Central Administration complex** will be the new focus of the LAU Byblos campus.

Atelier Pagnamenta Torriani (Atelier PT) researched the history, local culture and typology of this ancient city and weaved the findings in the conceptual design. Byblos is at the root of the Latin word Bibliotheca, or library, and is where the Phoenician alphabet originated.

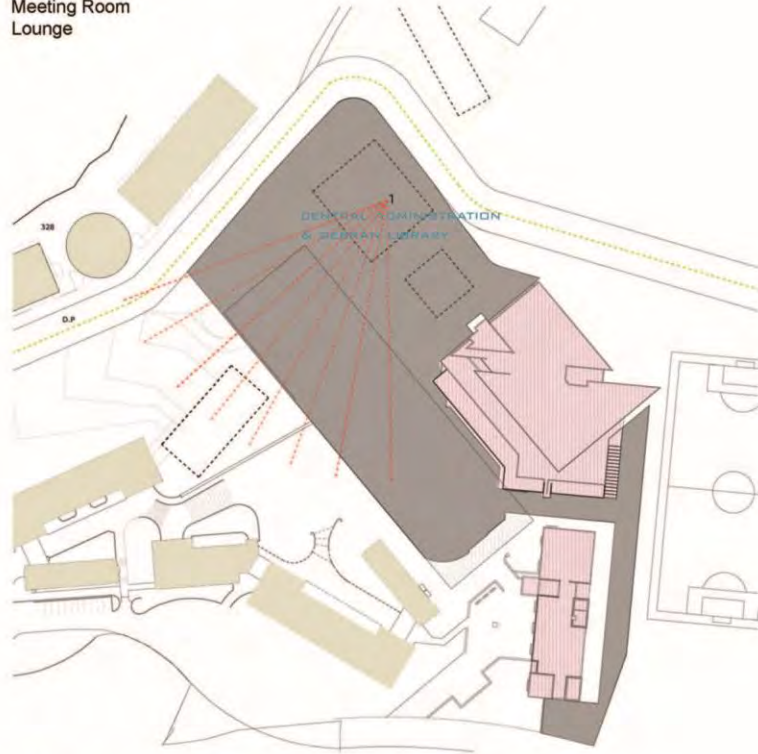
The exposed metamorphic rock at the site reflects the historic stratification of the ancient city of Byblos and became a catalyst for the design. The new buildings, like fragments from the excavated mountain, are juxtaposed and the resulting interstitial space forms a sunken amphitheater with the exposed sedimentary rock as the backstage. The double skin design, inspired by the local Riwaaq, or arcade, is interpreted with a curtain wall and a perforated skin along the western/southern exposures. A pattern based on the ancient Phoenician alphabet will highlight Byblos's cultural heritage. Atelier PT proposed incorporating passive design features derived from the local typology into the conceptual phase and subsequently prompted the client to target LEED Gold for the project.

The open amphitheater will provide students and faculty with performance and meeting opportunities. The library will offer open study areas, intimate lounge areas and study rooms and a Net-Café with outdoor seating.



Central Administration

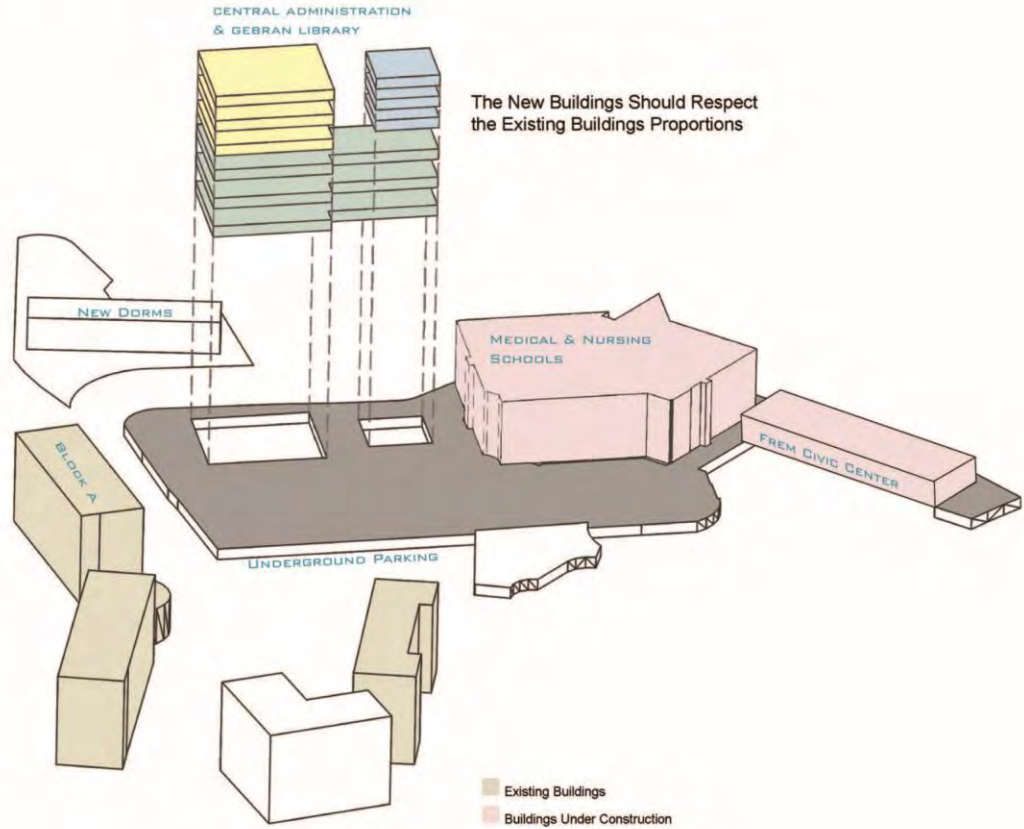
- Reception
- Lounge
- President's office
- Special Assistant to the President's office
- Vice President for Academic Affairs office
- Vice President for Student Development and Enrollment Management office
- Vice President for University Advancement office
- Vice President for Human Resources and University Services office
- Vice President for Finance office
- Visitor's office
- Relation's office
- Meeting Room
- Lounge



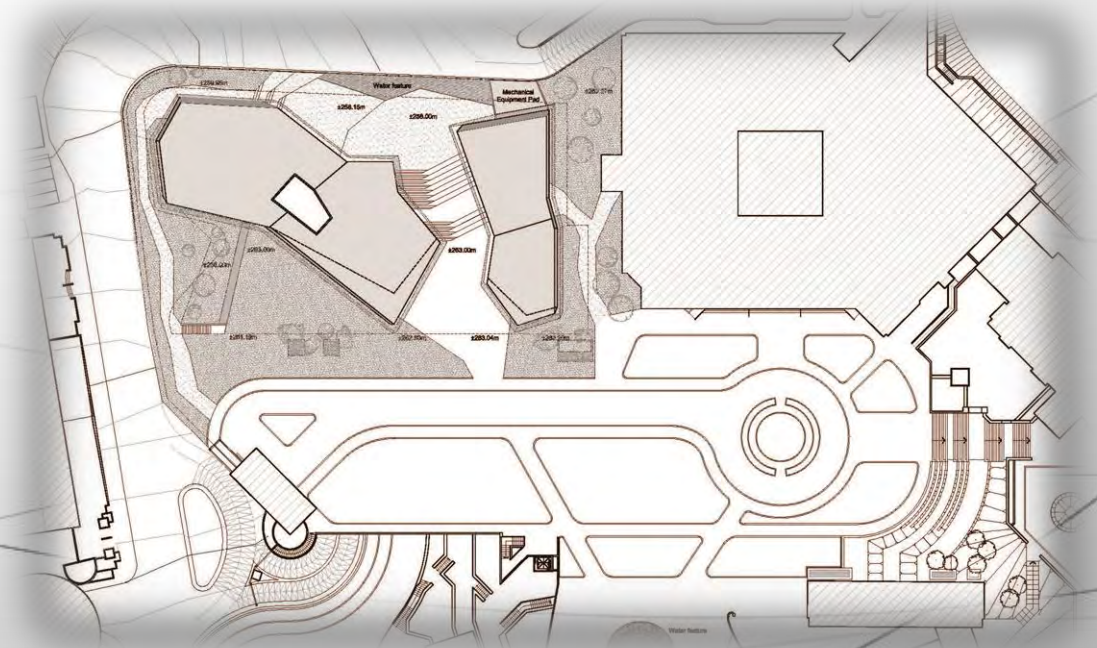
The New Central Administration & Library Project has a main view 1 Towards the Campus

Library

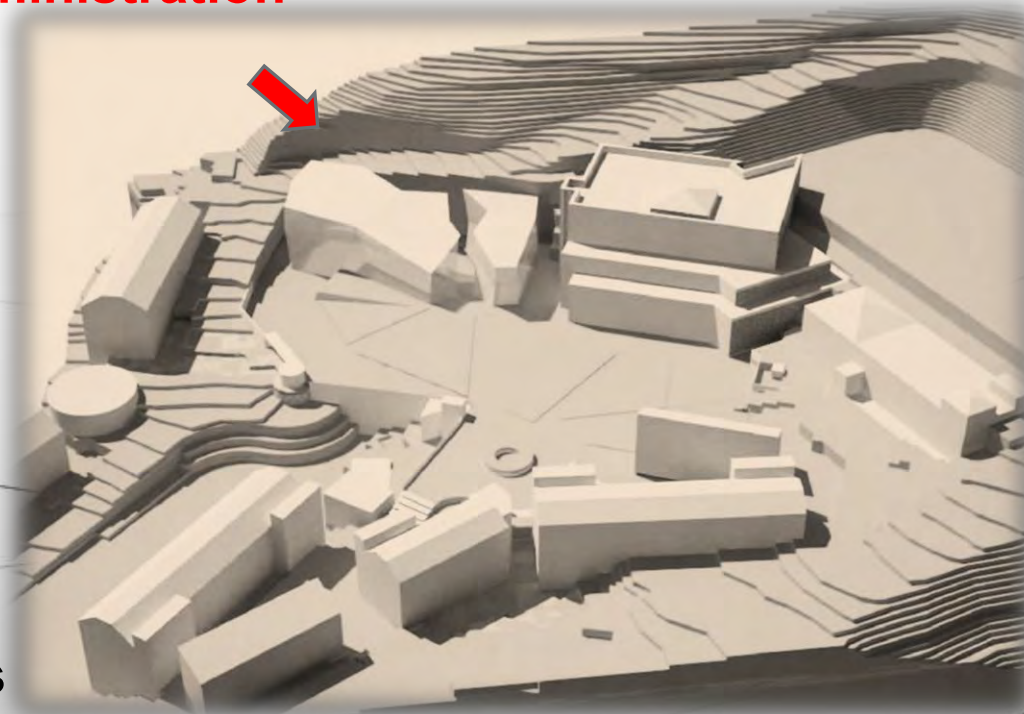
- Shipping / Receiving Cataloging & acquisition
- Storage
- Technical services
- Open periodical display & seating
- Open collection counter & seating
- Seating & study rooms
- Staff Offices



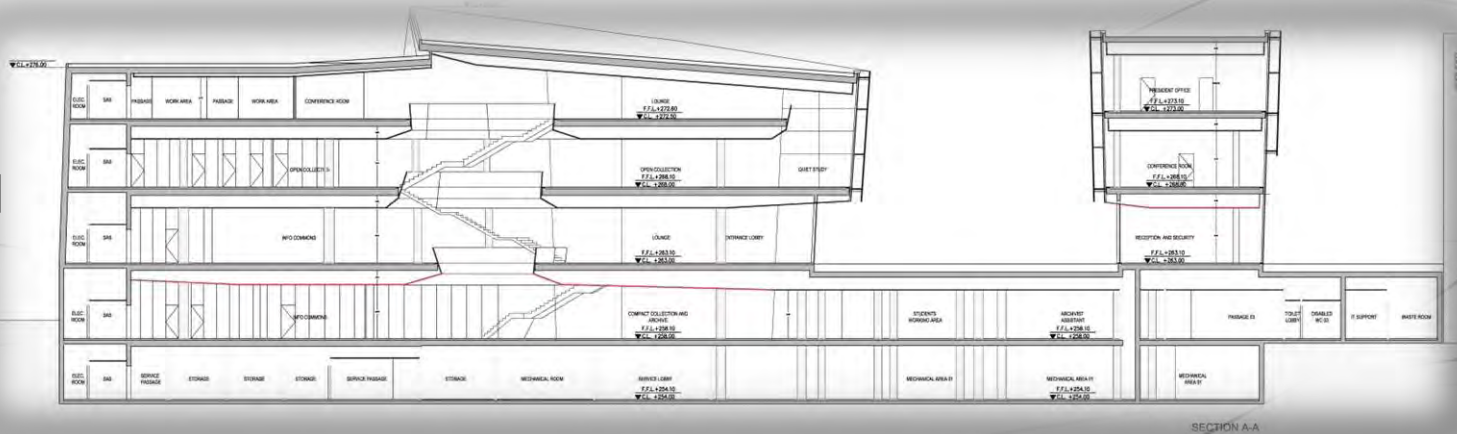
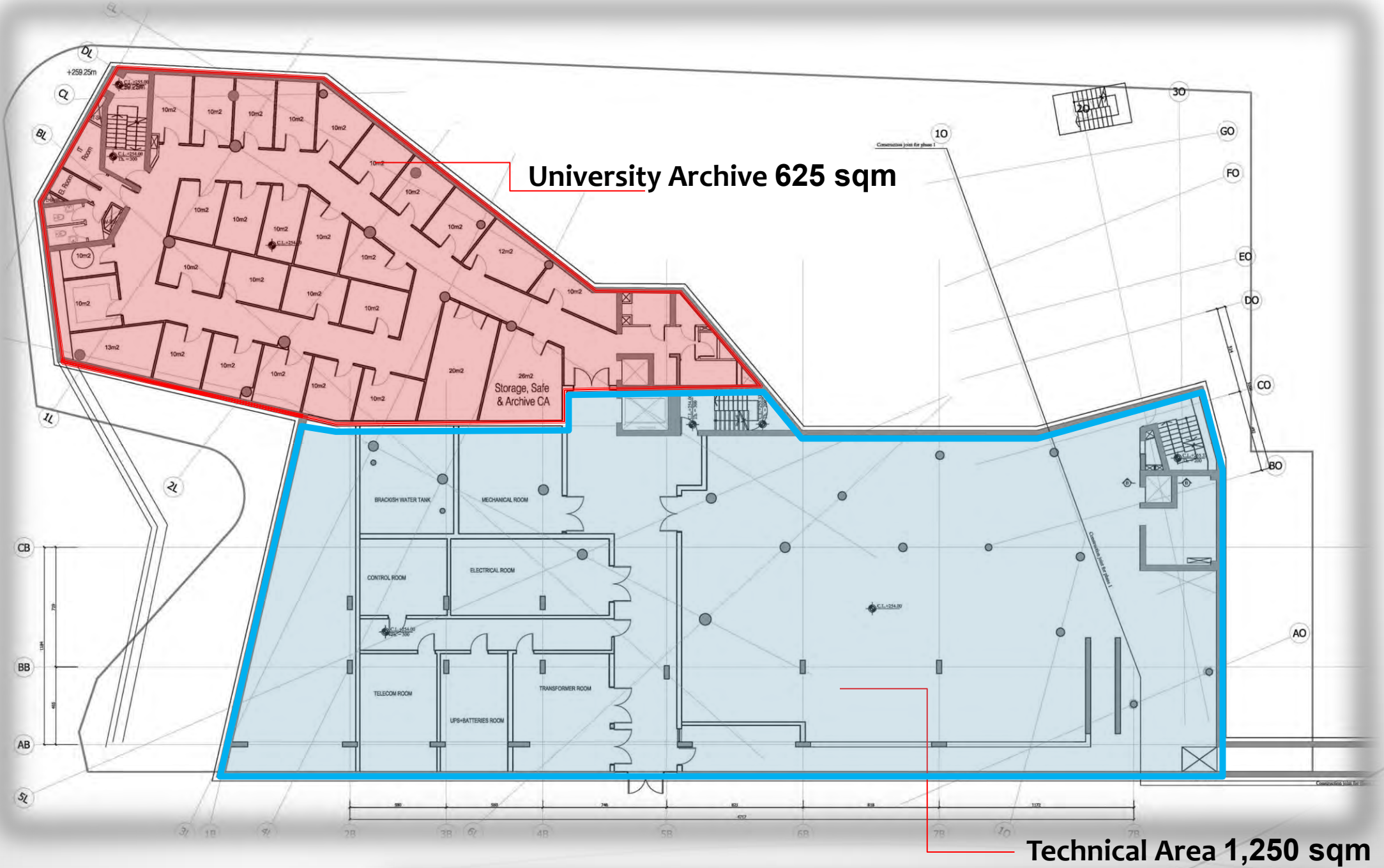
1. Monumental entrance leads down into the “crack”
2. Void in between the two buildings: connects to main lobby and circulation hub.
3. Back court cool exterior space for seating and relaxing.
4. Promenade bring people up to the shaded campus green



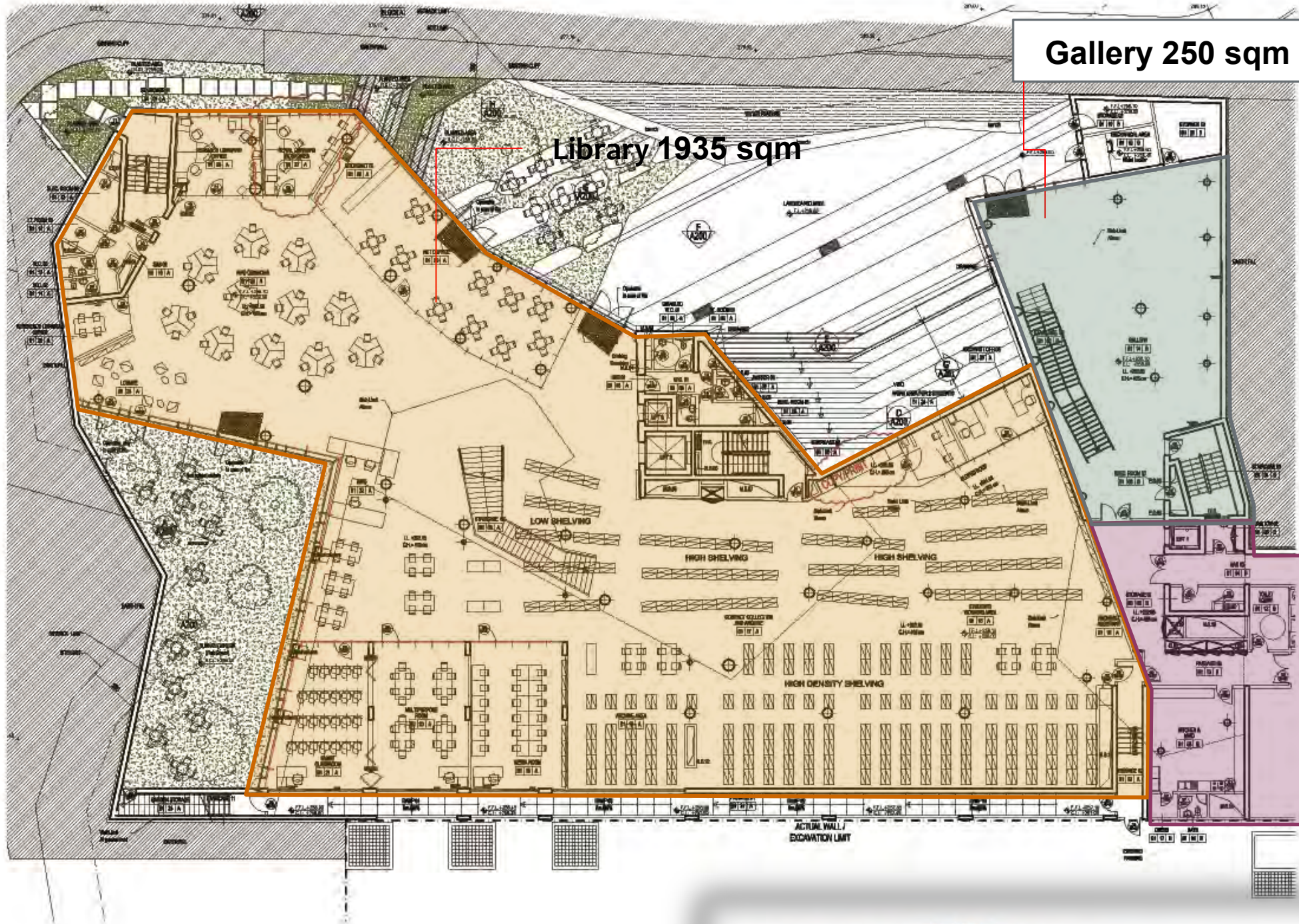
Frem Civic Center



2nd Basement - LEVEL 1
Area 1,800 sqm



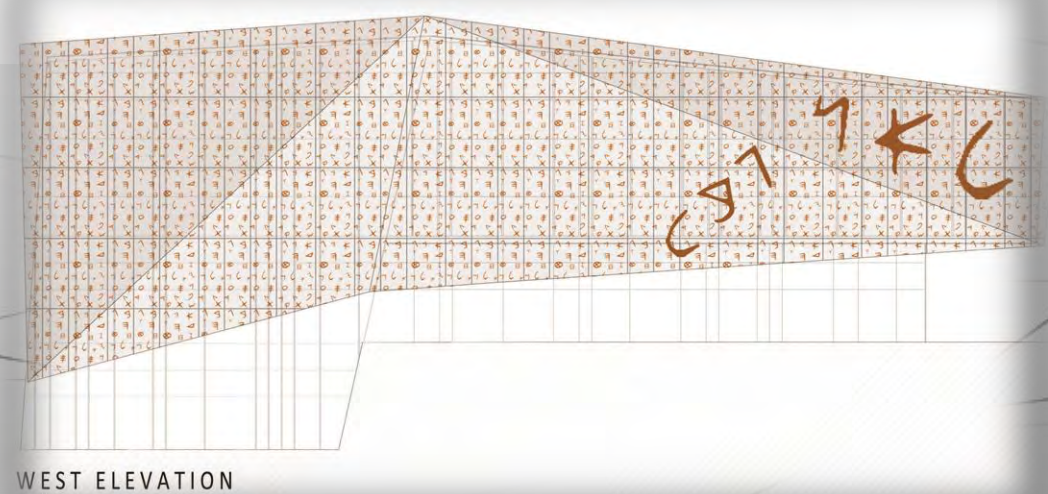
**1st Basement - LEVEL 2
 Area 2,515 sqm**



Gallery 250 sqm

Library 1935 sqm

Services 330 sqm



WEST ELEVATION

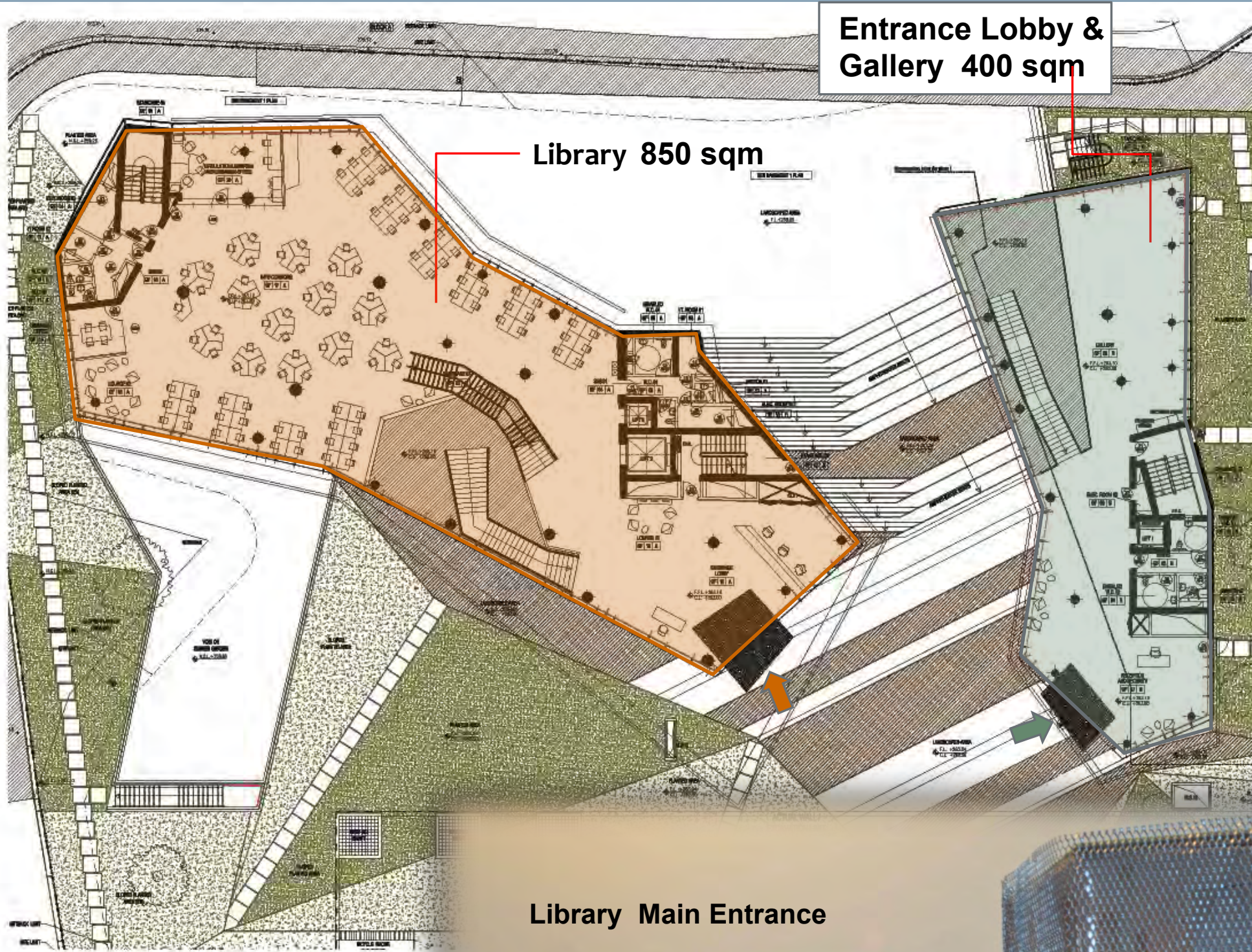


Library Common Area with Views to the Sunken Garden

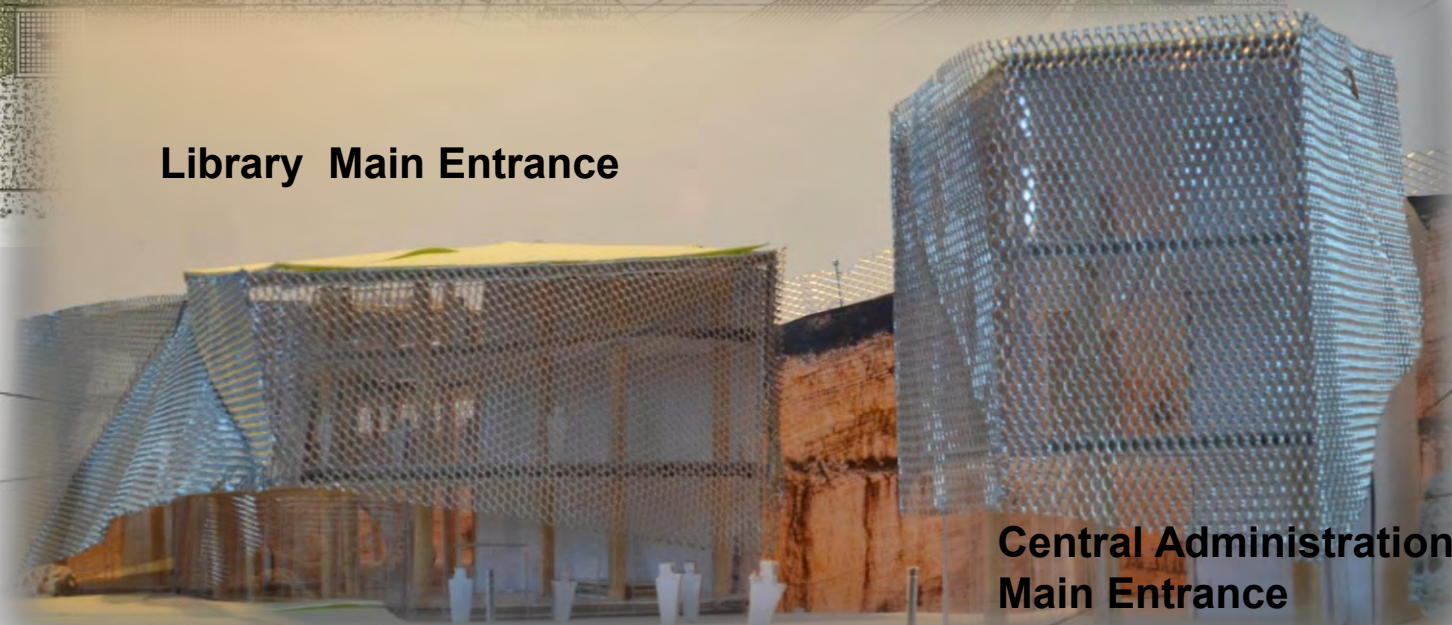


**LIBRARY AND CENTRAL ADMINISTRATION BUILDING
BYBLOS CAMPUS**

**Ground Floor- LEVEL 3
Area 1250 sqm**

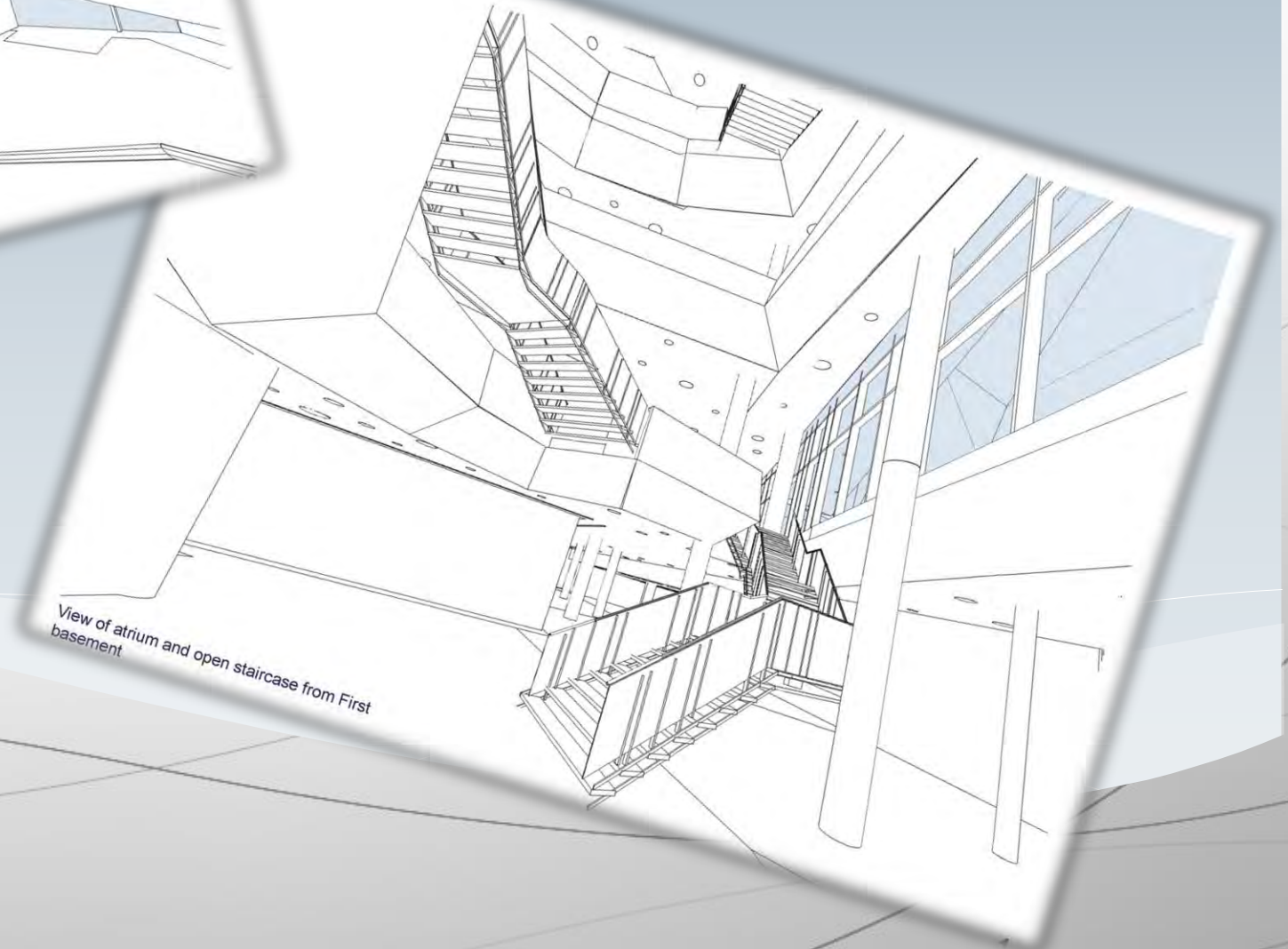
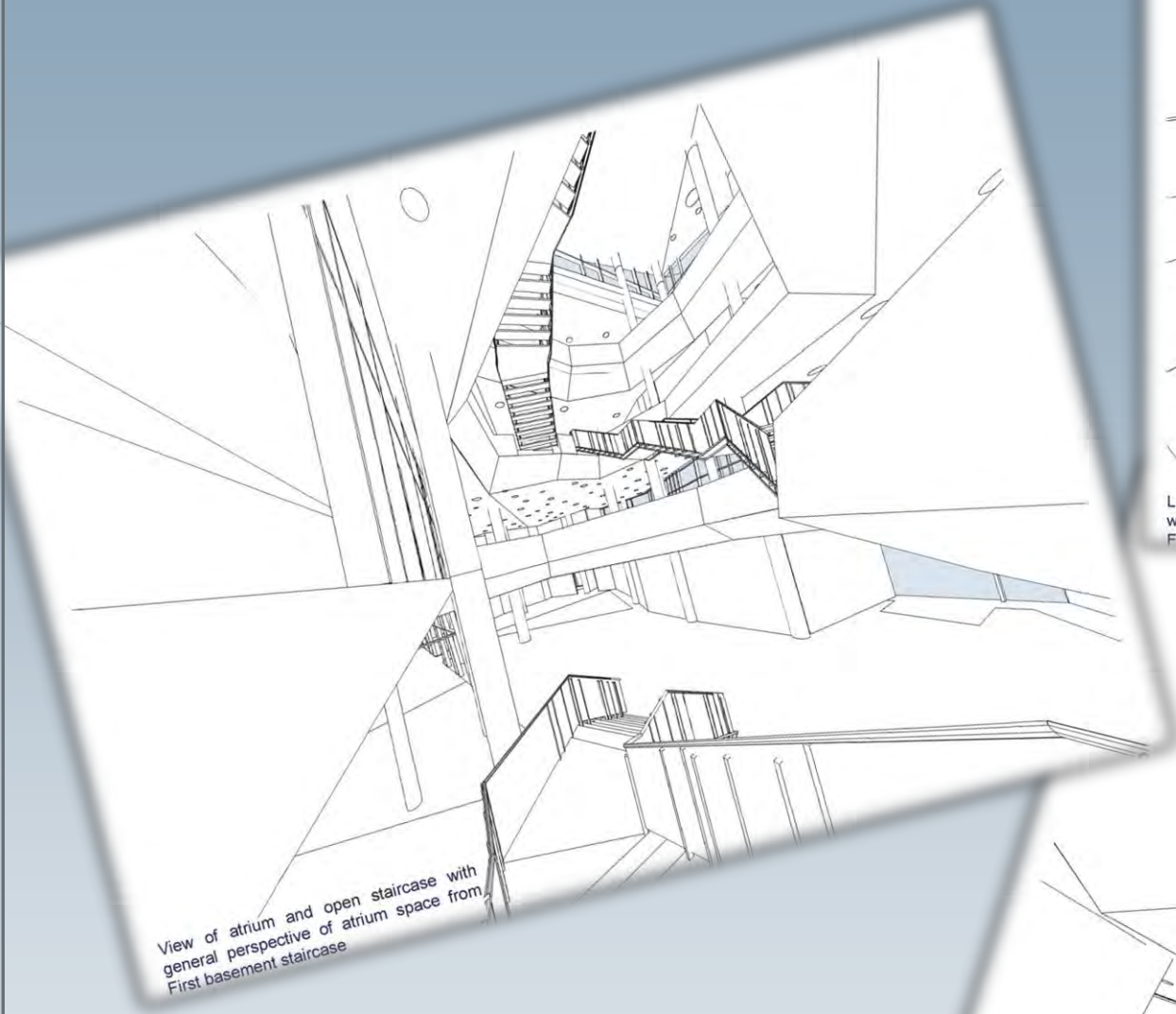


Library Main Entrance



**Central Administration
Main Entrance**

Spatial Sequence of Library Atrium and Open Staircase

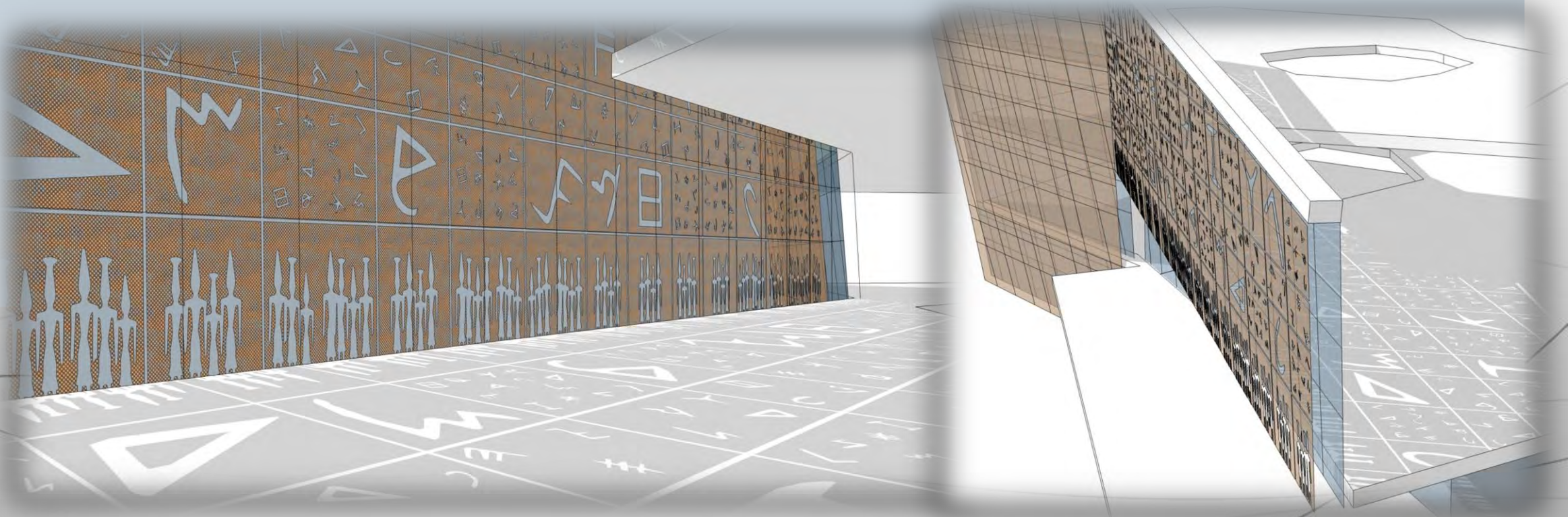


Library Entrance Lobby



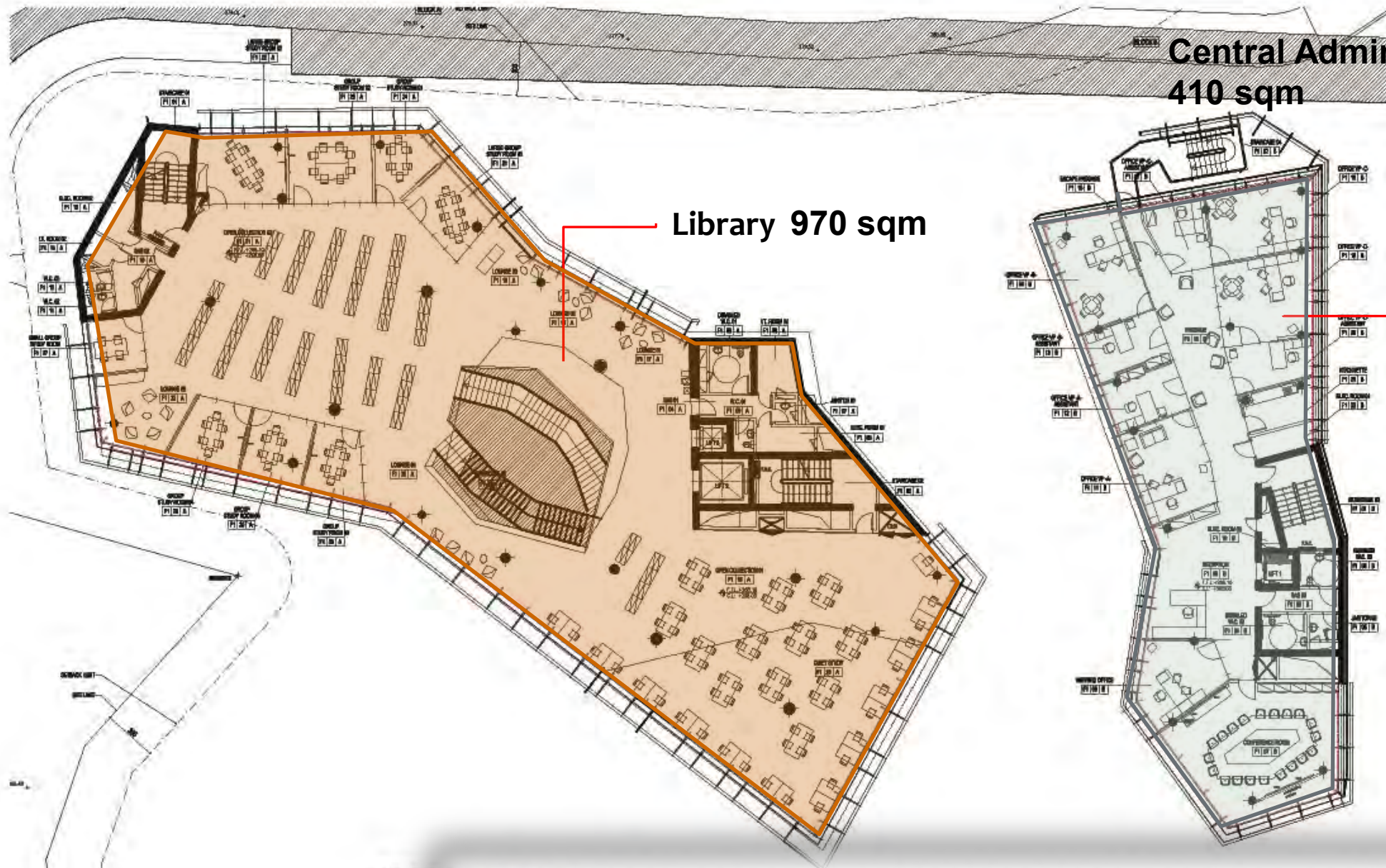


A Perforated Metallic Sheet Skin Along the Western/Southern Elevations



**LIBRARY AND CENTRAL ADMINISTRATION BUILDING
BYBLOS CAMPUS**

: 57-@H9GA5B5; 9A9BH



**Central Administration
410 sqm**

Library 970 sqm

**1st Floor - Level 4
Area 1380 sqm**



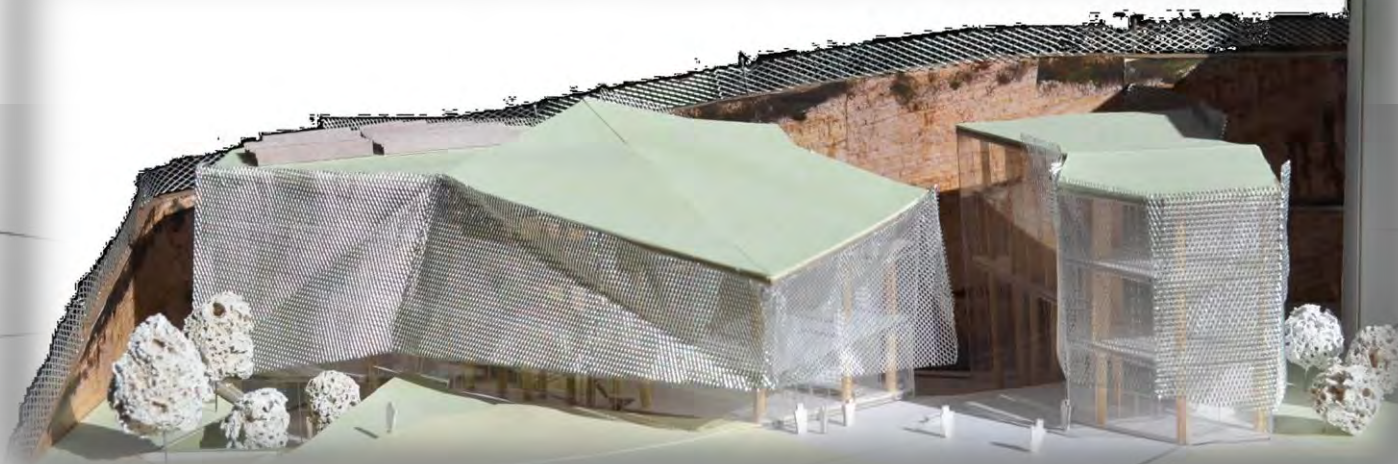
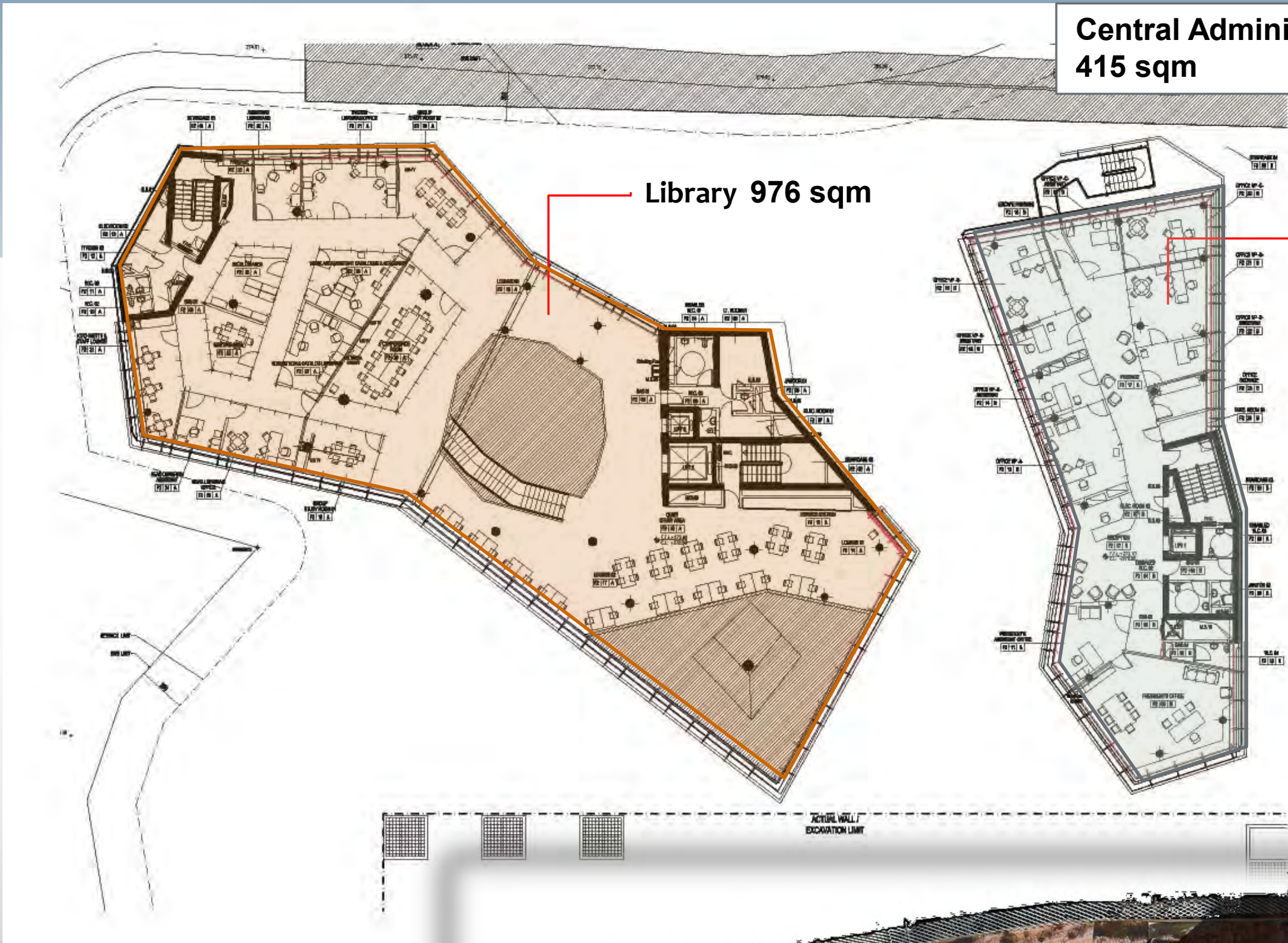
Exterior Amphitheater Stage and Library Café Areas at Excavated Rock



2nd Floor - Level 5
Area 1,391 sqm

Central Administration
415 sqm

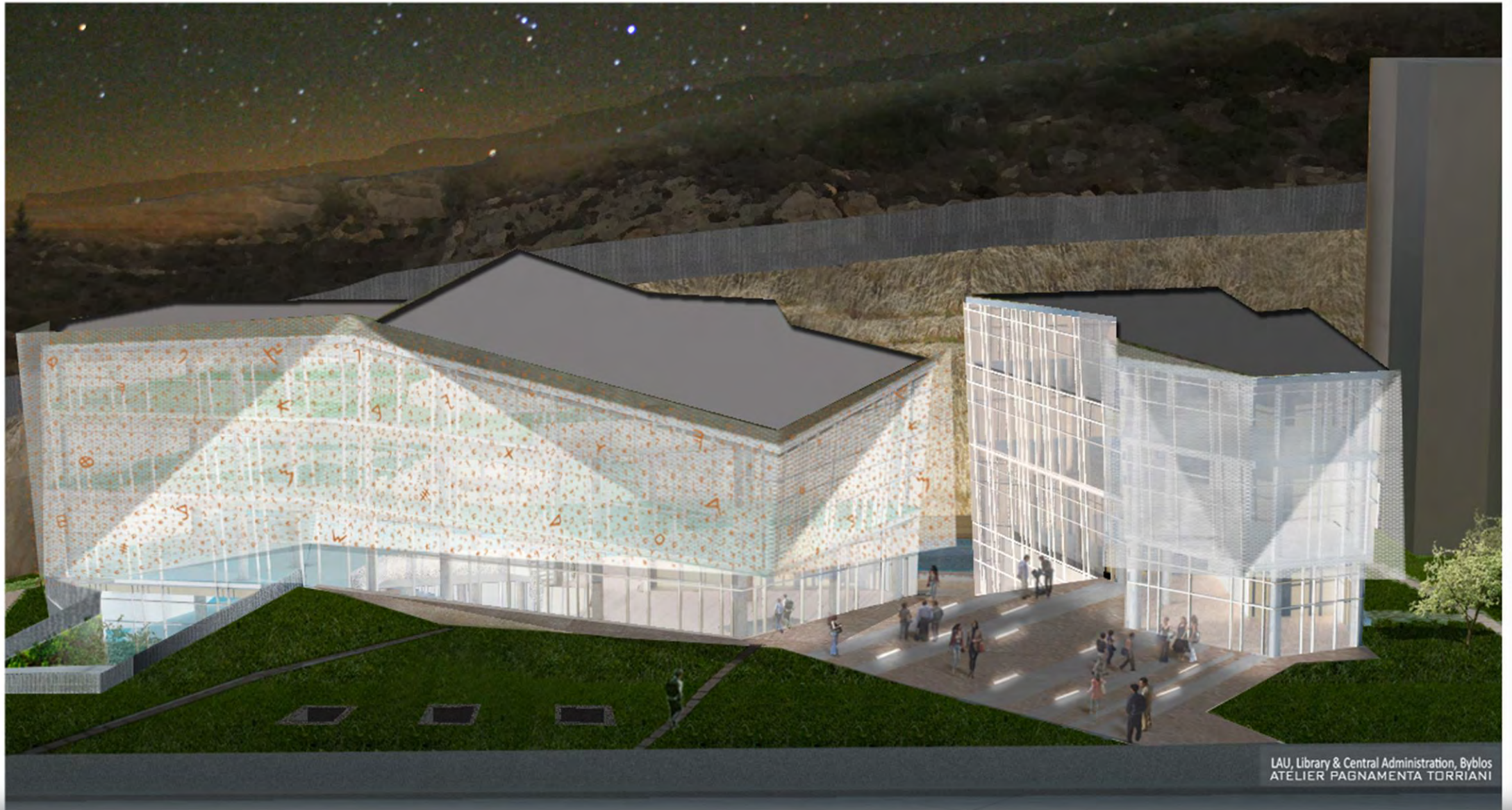
Library 976 sqm



Library - Main Reading Room



Night-View of Library and Central Administration Buildings



LAU, Library & Central Administration, Byblos
ATELIER PAGNAMENTA TORRIANI

Daytime -View of Library and Central Administration Buildings



LAU, Library & Central Administration, Byblos
ATELIER PAGNAMENTA TORRIANI